



**MICHAEL SOLE**

Searcys | The Gherkin  
30 St Mary Axe  
London EC3A 8EP

27th October 2014 to 31st January 2015

**GXGALLERY**

43 Denmark Hill London SE5 8RS

T: +44 (0)20 7703 8396

info@gxgallery.com



# Michael Sole

SEARCYS

Searcys | The Gherkin  
30 St Mary Axe London EC3A 8EP

G X G A L L E R Y

43 Denmark Hill London SE5 8RS  
T: +44 (0)20 7703 8396  
[www.gxgallery.com](http://www.gxgallery.com)  
[info@gxgallery.com](mailto:info@gxgallery.com)

GX Gallery is proud to present the new works by Michael Sole.

Michael graduated from Wimbledon College of Art, London, in 2008.

His major interest is nature and the re-evaluation of its painterly tradition. Michael's work explores painting as a process using the great outdoors as a subject matter. To gain inspiration he places himself into the environment he paints, enabling him to bring thoughts, ideas, and the physical presence of the landscape back into the studio as a transferral process.

Since graduating from a BA in Fine Art from Wimbledon College of Art, Michael has gone on to exhibit in group and solo shows across England and France. In 2009 and 2010 he was awarded "Young Artist of the Year" by the Royal Society of Marine Artists for his work exhibited in a group show in the Mall Galleries, London. In 2013 he won The Royal Society of Marine Artists Award.

An artistic maturity that belies the youth of this rising star.

## Michael Sole

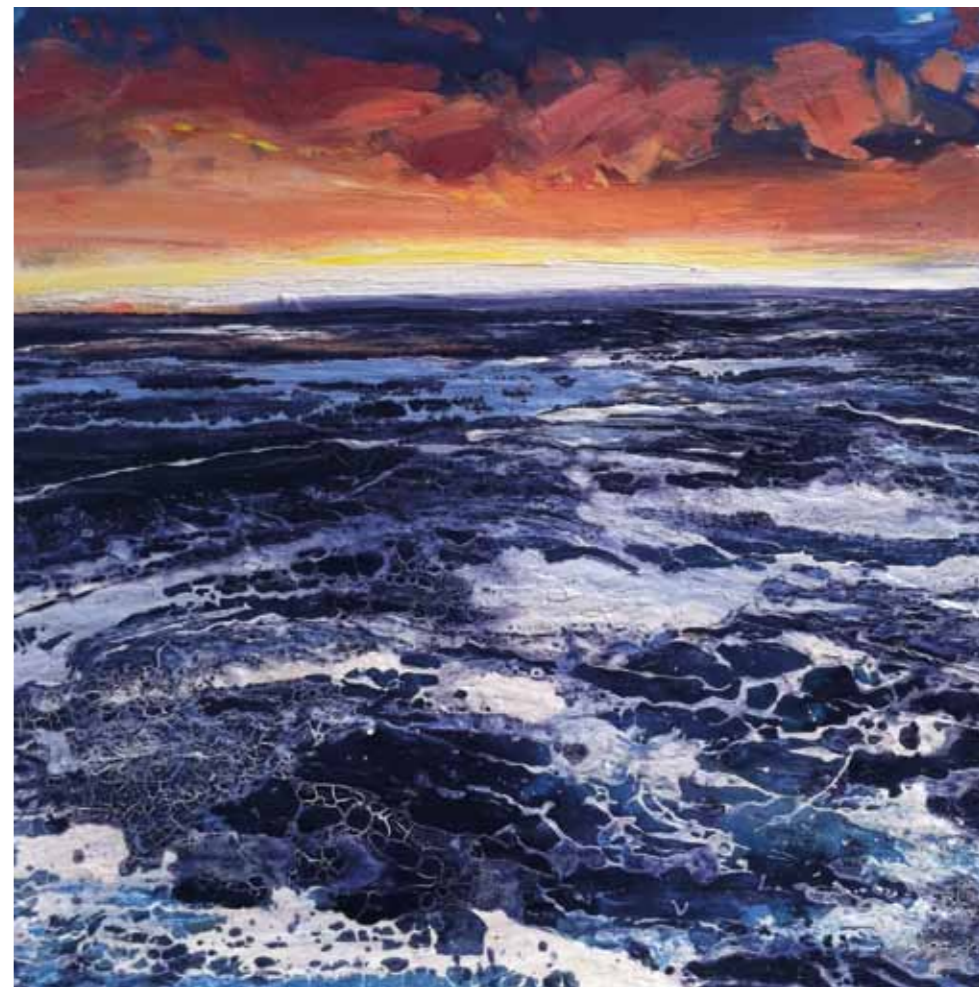


"The sea and the sky are fascinating to me, especially in extreme circumstances, storms etc. In painting I feel very strongly that energy must be met with energy. By this I mean big seas and powerful subject matter benefits from energetic, physical and confident painting which usually includes allowing the paint to have its own way, without using a brush. Dripping, pouring, throwing, lifting, shaking etc all add to these involuntary effects. Through these processes and techniques I hope to capture the power and atmosphere of the environment that I have placed myself into."



Above Rocombe

Oil & acrylic on canvas 45 x 35 cm



Alum Chine No.3

Oil & acrylic on canvas 62 x 62 cm





Alum Chine

Oil & acrylic on canvas 50 x 40 cm



Branscombe Chine

Oil & acrylic on canvas 50 x 40 cm





Iona No.1

Oil & acrylic on canvas 120 x 80 cm



Iona No.3

Oil & acrylic on canvas 50 x 40 cm





Iona No.4

Oil & acrylic on canvas 150 x 100 cm



Iona No.4 Sketch

Oil & acrylic on canvas 96 x 76 cm





Iona No.5 Sketch

Oil & acrylic on canvas 50 x 40 cm



Iona No.8

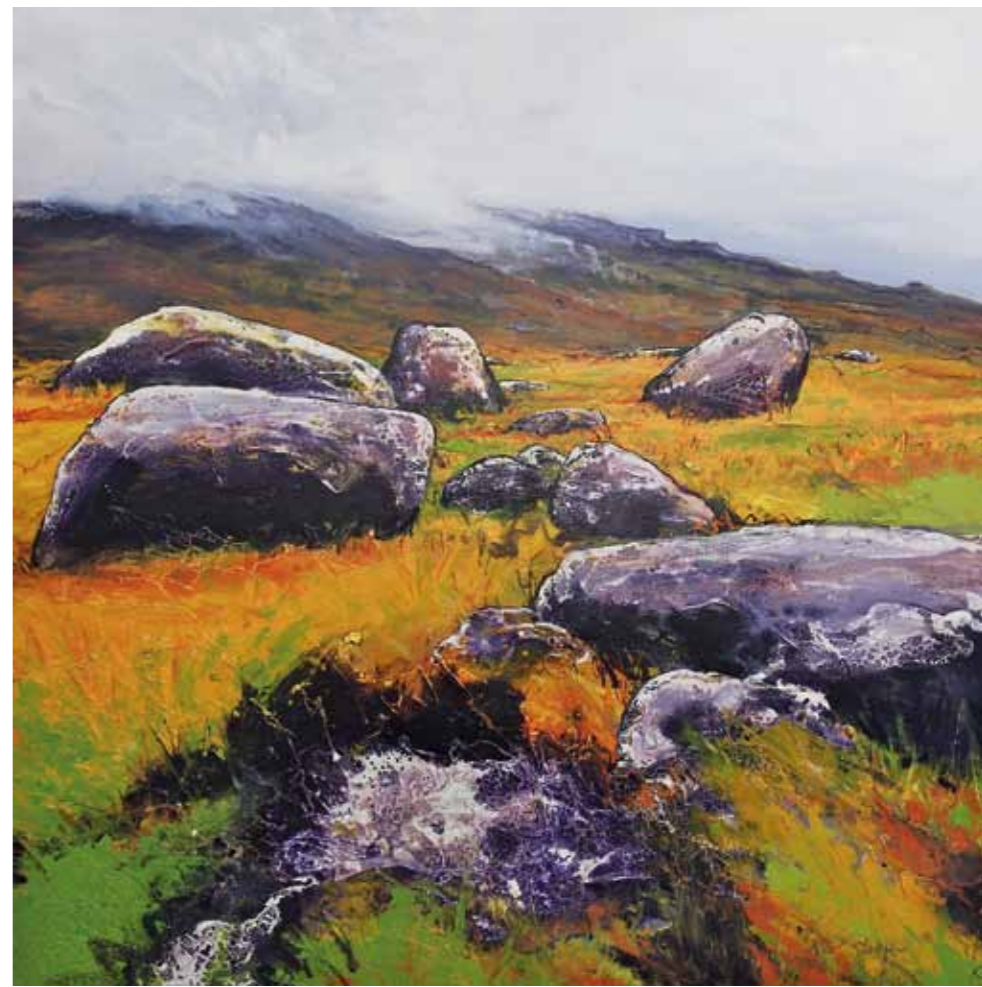
Oil & acrylic on canvas 122 x 96 cm





Lon Ban No.1

Oil & acrylic on canvas 120 x 94 cm



Lon Ban No.5

Oil & acrylic on canvas 122 x 122 cm





**Lon Ban No.2**

Oil & acrylic on canvas 120 x 94 cm



**Monmouth Beach No.1**

Oil & acrylic on canvas 102 x 52 cm





Nefyn

Oil & acrylic on canvas 97 x 77 cm



North Devon Sketch

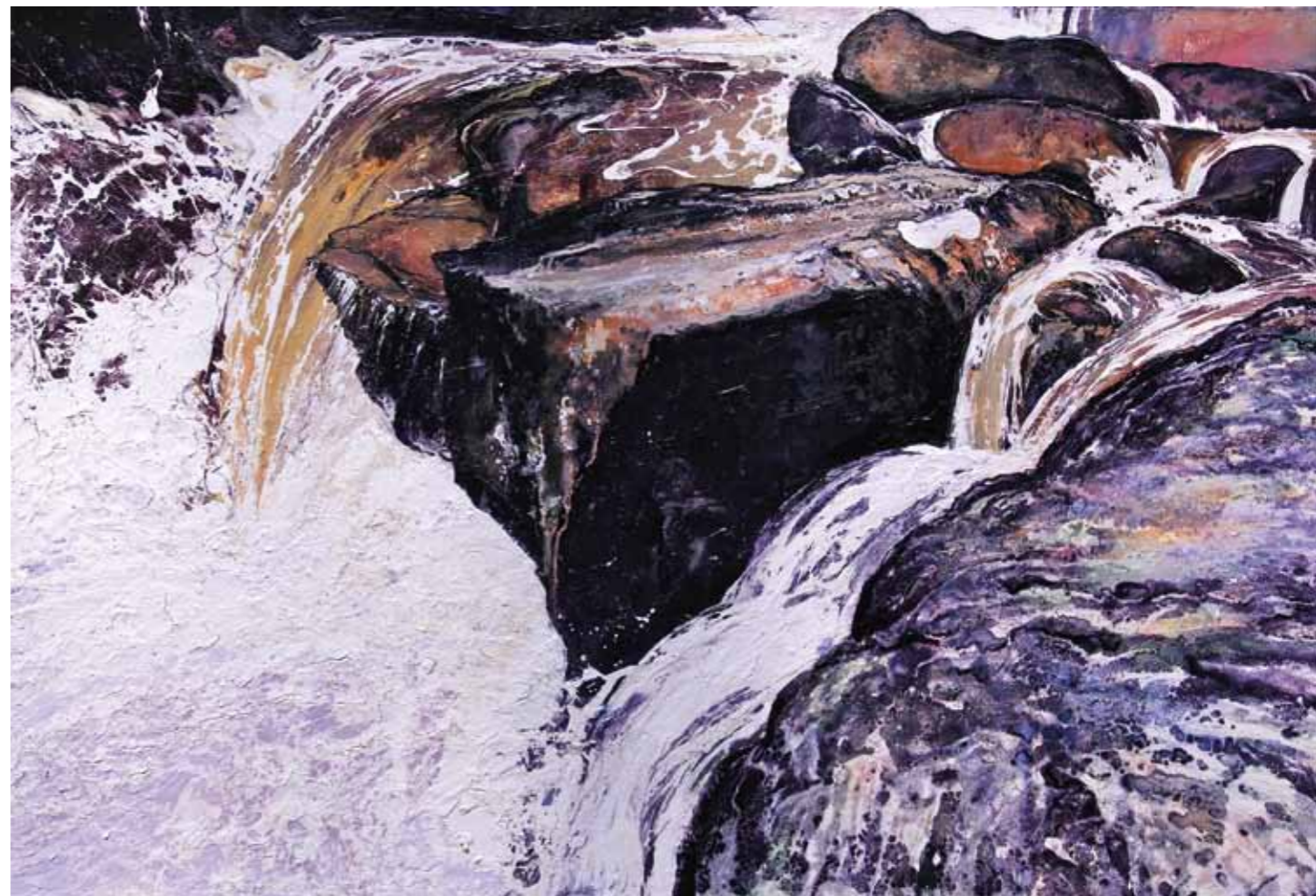
Oil & acrylic on canvas 55 x 40 cm





North Wales Sea and Sky

Oil & acrylic on canvas 122 x 96 cm



Òr Albannach

Oil & acrylic on canvas 180 x 123 cm





Out Over the Sea No.2

Oil & acrylic on canvas



Out Over the Sea No.3

Oil & acrylic on canvas 102 x 76 cm





Peninsular No.1

Oil & acrylic on canvas 77 x 76 cm



Peninsular Sketch

Oil & acrylic on canvas 77 x 52 cm





Red and Blue No.4

Oil & acrylic on canvas 150 x 120 cm



Rhossilli Emerald

Oil & acrylic on canvas 152 x 120 cm





Seaspray Rocks No.12

Oil & acrylic on canvas 122 x 96 cm



Sligachan No.6

Oil & acrylic on canvas 30 x 30 cm





Sligachan No.7

Oil & acrylic on canvas 40 x 40 cm



Sligachan No.8

Oil & acrylic on canvas 40 x 40 cm





Storm on the Riviera

Oil & acrylic on canvas 82 x 60 cm



Transparent Azure Sketch

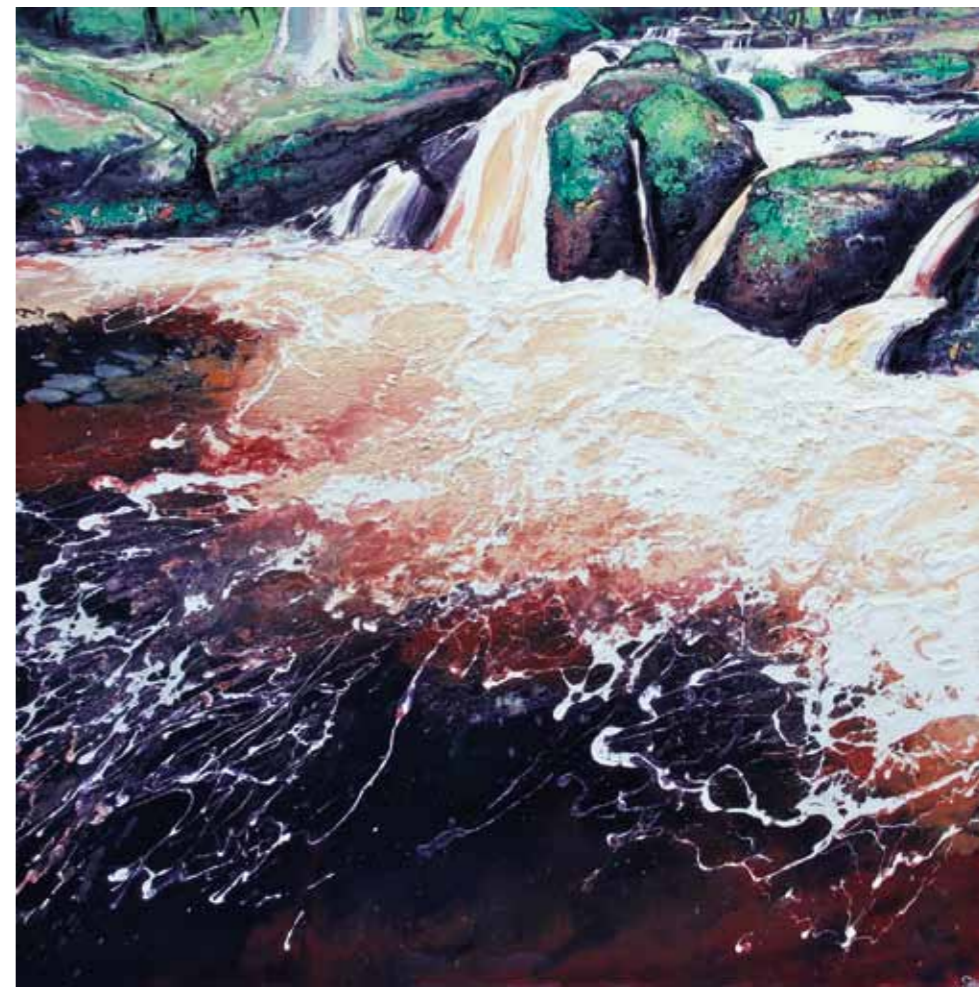
Oil & acrylic on canvas 40 x 30 cm





Wyoming Brook No.1

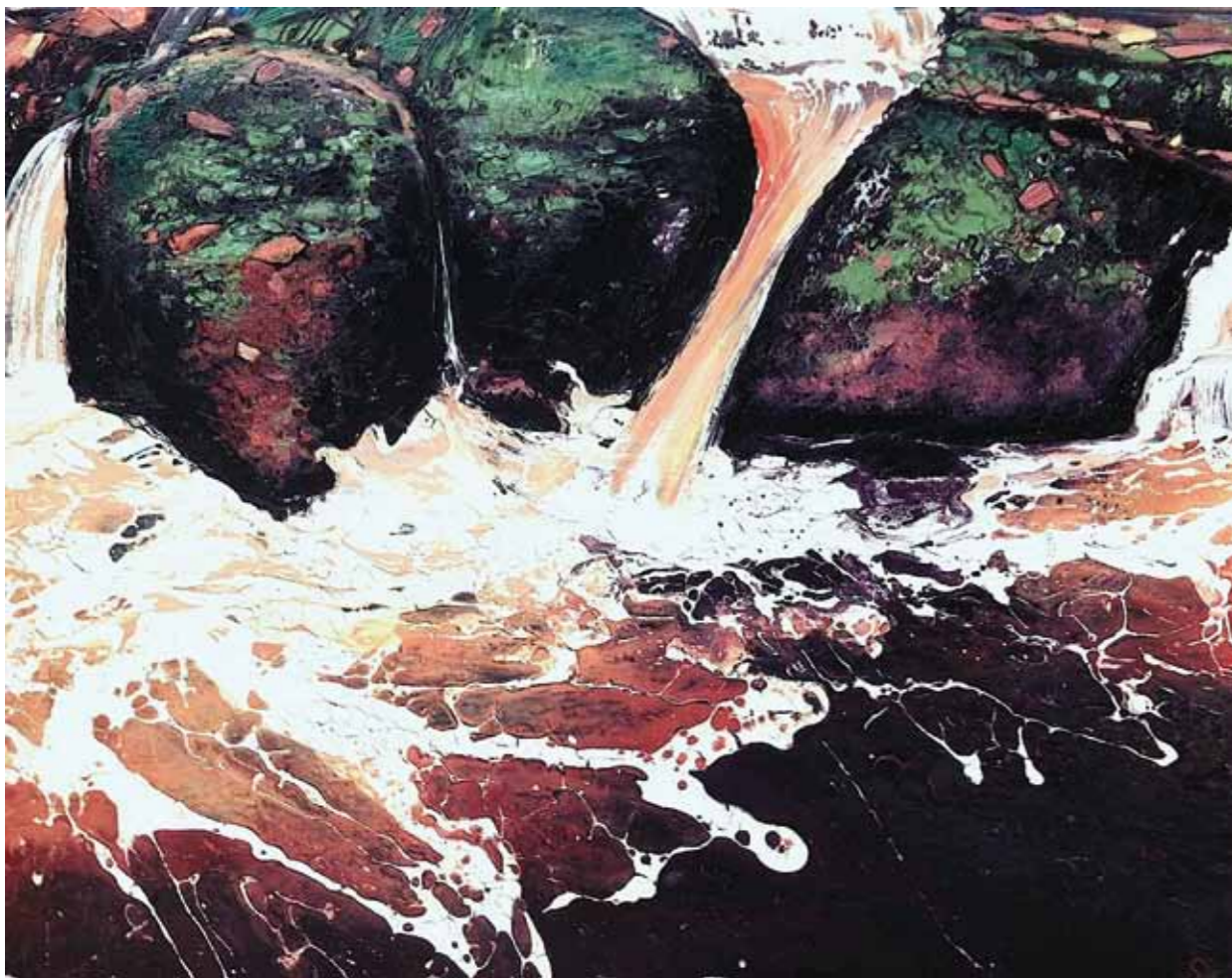
Oil & acrylic on canvas 75 x 60 cm



Wyoming Brook No.5

Oil & acrylic on canvas 152 x 152 cm





Wyoming Brook No.6

Oil & acrylic on canvas 97 x 77 cm



Established in 2001, GX is a contemporary fine art gallery specialising in artists with a focus on contemporary abstract figurative and participates in National and International Art fairs. Our London gallery is located in a 1500 sq. ft. Grade II listed building in London's historic Camberwell arts district and is architecturally a unique platform for contemporary artwork. The gallery is within walking distance of Camberwell Arts College, South London Art Gallery, Goldsmiths College and approximately 10 minutes from Victoria Station.

Our aim is to share contemporary art knowledge and art making in its current form through dedicated spaces and significant global art events. GX also supports local educational institutions and introduce new faces through an annual program.

The gallery represents a roster of artists specialising in thematic group exhibitions and focused solo shows. Clients can be confident that GX artists are selected based on their inclusion in public and private collections. The gallery also offers a wide range of services including commercial and residential installations, artwork restoration, resale or direct purchase of single pieces or collections of important contemporary work.

*For enquiries and sales please contact*

**G X G A L L E R Y**

43 Denmark Hill London SE5 8RS

T: +44 (0)20 7703 8396

info@gxgallery.com

GX Framing ([www.gxframing.com](http://www.gxframing.com)) offers museum-quality bespoke framing.

Catalogue design **Ferdy Carabott**